

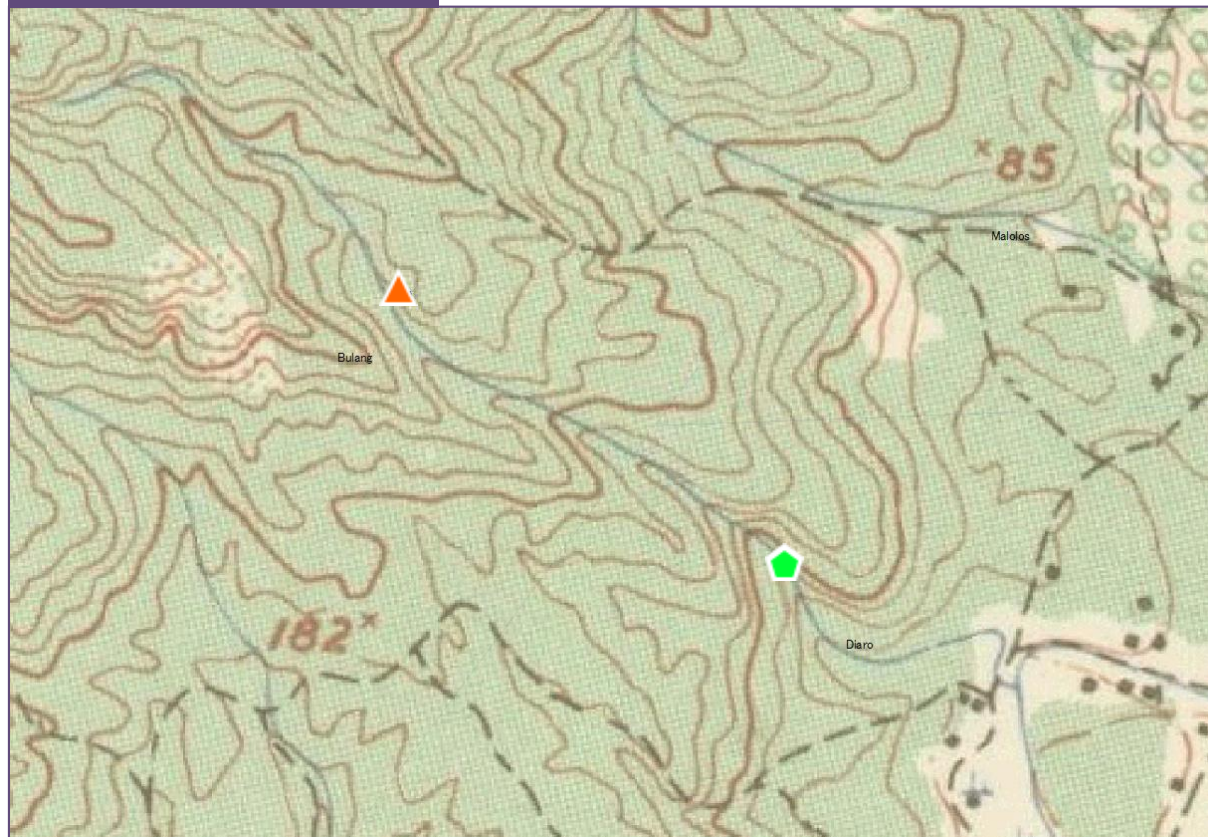
HYDROPOWER PRE-DETERMINED AREAS

AREA NO. 14 - PALALI FALLS

PROFILE

Project Name : Palali Falls
Potential Capacity : 0.17MW
Type : Run of river
Water Source : Palali Falls
Location
Region : Bicol Region (V)
Province : Albay
Municipality : Malinao
Coordinates
Weir/Dam : 13° 22' 42.5" N, 123° 39' 14.2" E
Powerhouse : 13° 22' 26.3" N, 123° 39' 36.7" E
Catchment Area : 0.76km²
Effective Head : 201.9m
Discharge : 0.11m³/s

LOCATION MAP



HYDROPOWER PRE-DETERMINED AREAS

➤ AREA NO. 14 - PALALI FALLS

BACKGROUND

- The Hydropower Service Contract (HSC) which previously covered the development of the project was awarded on 02 February 2010 and was eventually terminated on 07 November 2014.
- The HSC was terminated due to the RE Developer's failure to declare the commerciality of the project and apply for the conversion of the HSC from Pre-Development to Development Stage within the prescribed period.
- The Feasibility Study and Detailed Engineering Design were undertaken by Vergel³ Consult in 2006.

