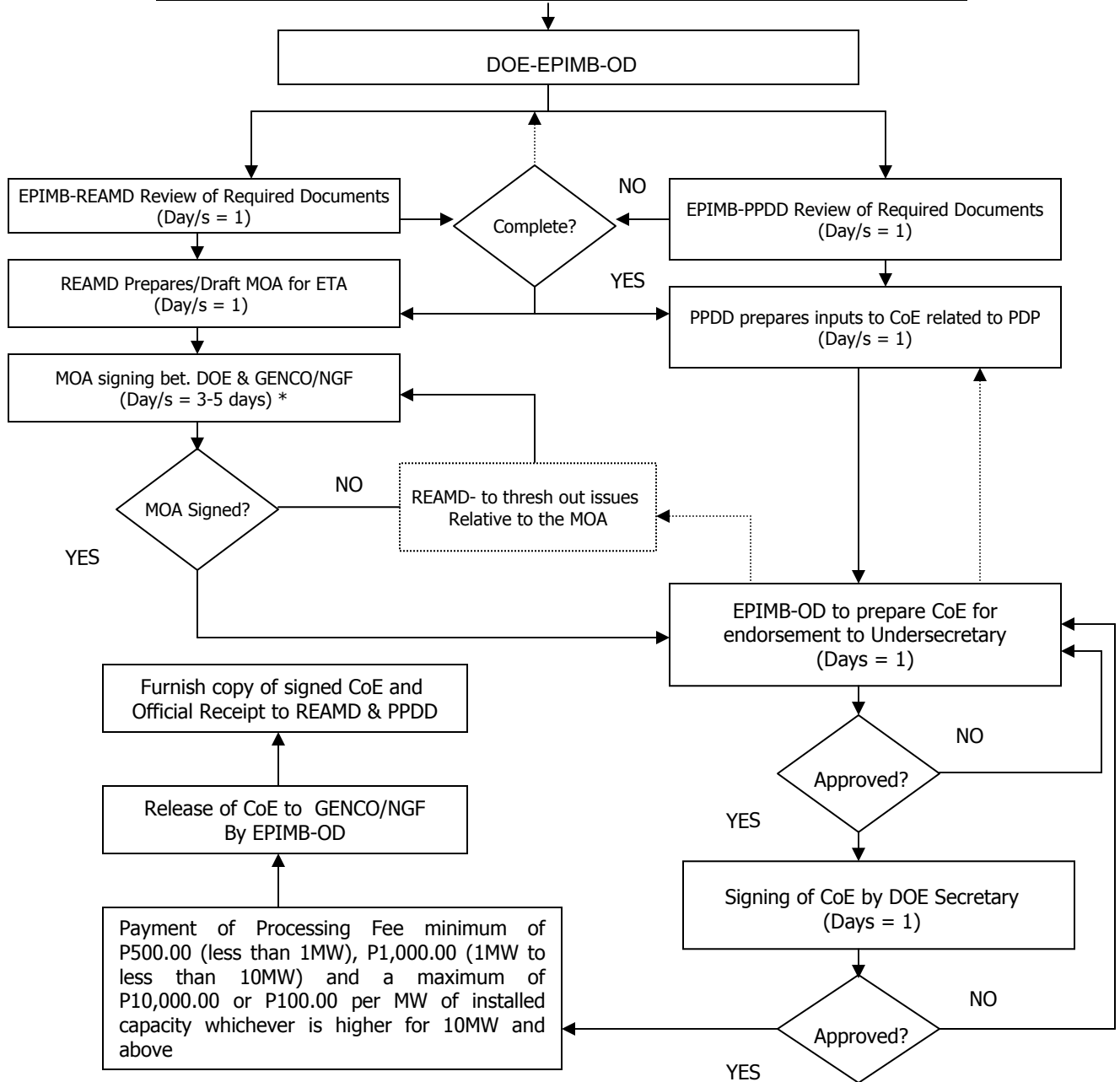


PROCESS FLOW IN THE ISSUANCE OF DOE CERTIFICATE OF ENDORSEMENT (CoE)

(Compliance to PDP and E.R. No. 1-94, as amended)

REQUIRED DOCUMENTS FROM GENCO & NEW GENERATING FACILITY

1. Letter of Request
2. Company Profile
3. Project Background/Description (please include: exact location, official name of the facility, commissioning date and off-taker of the electricity)
4. Articles of Incorporation
5. For Existing Generating Facility: Historical Generation Data
6. Service/Operating Contract (for Renewable Energy-Based Power Plant)



Note: The DOE Certificate of Endorsement is a requirement under the Amended Guidelines for the Issuance of Certificate of Compliance by Energy Regulatory Commission promulgated on March 7, 2003.

*The estimated number of days is based on the assumption that the party has signed and documented the said MOA.

➤ GENCO – Generation Company
➤ NGF – New Generating Facility

➤ MOA – Memorandum of Agreement
➤ ETA – Establishment of Trust Accounts

EPIMB – Electric Power Industry Management Bureau

Address the Letter of Request to the